

# THE ANCHOR

---

# THE ANCHOR

St. Luke's Episcopal Church  
East Greenwich, Rhode Island



**APRIL 2011**

---

---

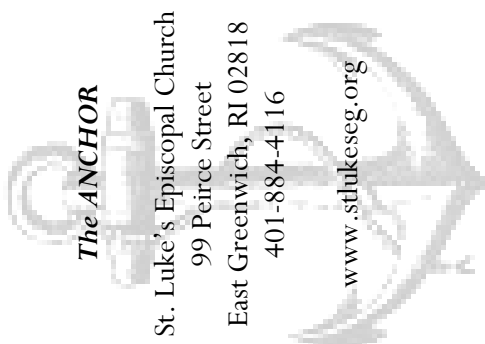
Dear Friends,

Why do we call it “Holy Week”?

During this month of April, we will be moving through the last weeks of Lent toward those final days that the church has traditionally referred to as Holy Week. This observance appears to have originated during the fourth century when Christians began to make pilgrimages to Jerusalem and re-enact the events of the last week of Jesus' life as they are recorded in the gospels.

The church observes this last week of Lent, beginning with Palm Sunday, as a holy and solemn time to focus on the passion and death of Jesus. In considering the deepest mysteries of our faith, we need to place the hope and promise of Resurrection in the context of Jesus' costly and redemptive sacrifice. Only by facing the magnitude of sin and its consequences in the world can believers fully appreciate the significance of the victory over death on Easter morning. Full and faithful participation in the worship of Holy Week provides the best opportunity to grow in understanding of the Christian message.

*Palm Sunday.* This service begins with shouts of praise at the blessing and procession of palms, commemorating Jesus' entry into Jerusalem, and moves into the narrative of our Savior's last week through the dramatic reading of the Passion Gospel.





## The Mission of St. Luke's Episcopal Church East Greenwich, RI:

*To worship and serve God  
as we reflect and pass on the Light of Christ*

**Interim Rector:** The Rev. Gregory Prior ([greg.prior@stlukeseg.org](mailto:greg.prior@stlukeseg.org))

**Assistant to the Rector:** The Rev. Dcn. John E. Higginbotham

([john.higginbotham@stlukeseg.org](mailto:john.higginbotham@stlukeseg.org))

**Deacon:** The Rev. Dorothy L. Brightman ([deacon.ricky@stlukeseg.org](mailto:deacon.ricky@stlukeseg.org))

**“L.A.M.P.”:** Jeffrey Clark ([jeffreyclark1@mac.com](mailto:jeffreyclark1@mac.com))

**Deacons Emeriti:** The Rev. Hedwig B. Neale ([hbneale@aol.com](mailto:hbneale@aol.com))

The Rev. Edwin F. Hallenbeck ([teddeacon@aol.com](mailto:teddeacon@aol.com))

**Coordinator of Christian Education:** Susan MacDonald

([susan.macdonald@stlukeseg.org](mailto:susan.macdonald@stlukeseg.org))

**Music Director:** Priscilla A. Rigg ([priscilla.rigg@stlukeseg.org](mailto:priscilla.rigg@stlukeseg.org))

**Parish Admin:** Barbara DeFusco ([barbara.defusco@stlukeseg.org](mailto:barbara.defusco@stlukeseg.org))

**Nursery/Wedding Coordinator:** Karen Simas

**Sexton:** Steve Yanku

**Assistant Sexton:** David Rodriguez

**Anchor :** Barbara DeFusco ([barbara.defusco@stlukeseg.org](mailto:barbara.defusco@stlukeseg.org))

### WORSHIP SERVICES

Sundays 8 am and 10 am Holy Eucharist

Sunday School: 9 am Gr. 3-12; 10 am preschool-Gr 2

Morning Prayer: M-Th 9:10 am

Tuesdays 12 noon Holy Eucharist & Healing

*Church is open Monday through Friday  
for prayer and meditation between 9 am and 2:30 pm*

### OFFICE HOURS

Monday - Friday 9 am - 2:30 pm

### VESTRY

*Senior Warden:* Lisa Johnson *Junior Warden:* Arlene Serdakowski

*Treasurer:* Greg deGroot *Clerk:* Cindy Fogarty

Baltimore Alvarez, Ruth Batchelor, Jamie Millard

Leslie Gunther, Dave Savage, John Walsh

Jennifer Hague, Heather MacDonald, David Sampson

## ANCHORLINE (continued)

ANCHOR APRIL 2011

*Monday of Holy Week:* According to Matthew, Mark and Luke, Jesus returned to Jerusalem and, seeing shameful practices in the Temple area, cleansed the Temple. John's Gospel also records that he rebuked the unbelief of the crowds.

*Tuesday of Holy Week:* According to Matthew, Mark and Luke, Jesus again returned to Jerusalem where he is confronted by the Temple leadership for what he did the day before. They questioned his authority. Jesus also taught extensively using parables and other forms final teachings just before his passion.

*Wednesday of Holy Week:* Traditionally this day was called “Spy Wednesday” for it was on this Wednesday before the crucifixion that Judas conspired to hand Jesus over. For this he was paid thirty pieces of silver. Jesus likely spent the day in nearby Bethany. In the evening Mary of Bethany anointed Jesus with costly perfumed oil and Judas objected.

*Maundy Thursday:* The Eucharist on this day commemorates Jesus last meal with his followers, recalling the institution of the Eucharist and the church's call to servant ministry. The word Maundy comes from the Latin word for commandment, recalling Jesus “new commandment” to his disciples to love one another.

The altar is stripped at the close of the service as a mark of desolation as the passion of Jesus begins. Worshipers are also invited to take part in a vigil watch recalling Jesus' time in the Garden of Gethsemane and anticipating the sufferings of the crucifixion.

*Good Friday Liturgy:* Services on this day recall the brutal passion of Jesus as he carried his cross through the streets of the city and hung on the cross in great suffering. This is the most solemn and somber day in the life of the church and calls for thought and meditation.

*Saturday - The Great Vigil of Easter:* This most profound liturgy of the church recites the history of salvation and moves from the darkness of the burial of Jesus to the proclamation of the light of Christ and the first Easter "Alleluia."

Like the Christians of many centuries ago, we have the opportunity to enter the experience of the last week of the life of Christ. As we do so, we have an opportunity to deepen our vital awareness of the mysteries of the faith and thereby grow spiritually. I strongly encourage you to plan to enter fully into the observance of Holy Week through prayer, reading the scriptures and participating in the church services scheduled this week. When we do so, Easter becomes a day of great spiritual joy.

*In Christ's love,  
Greg Prior*



## ***TAIZÈ SERVICE***

**Good Friday**

April 22, 2011

7 pm

For several years St. Luke's has offered this beautiful sung prayer service on Good Friday to the community.

The music is simple sung chant supported by the choirs and with instrumental descants. The instruments are flute, oboe, violin and cello and enhance the chants in an improvised way. Multiple candles add a soft glow to the three crosses positioned in the chancel.

It is one of the most powerful liturgies that helps us to prepare for the ultimate Easter experience. For those who would like to deepen their Lenten spiritual life, please join us at the Taizé service.

---

### **2011 EPISCOPAL CHARITIES CAMPAIGN**

The week of March 27th kicks off the 2011 Episcopal Charities Campaign. Please pick up your slip in atrium on Sundays services throughout April. You may donate online on our website's link, [www.stlukeseg.com](http://www.stlukeseg.com) or through the mail with your credit card or personal check. If you have any questions, please contact Noel Bassett or Ken Poulton through the office. Thank you.

**The Power of Witness**

My Dear Friends in Christ,

As some of you know, I recently finished six weeks of Grand Jury duty in Providence. It was a very powerful experience for me, as it was for twenty two other jurors, as we listened to the testimony of many witnesses involved in capital cases.

Our job was to vote 'True Bill' or 'No True Bill' to indict on the cases brought before us based upon the preponderance of evidence presented by the victims, eye witnesses, and the police.

Throughout my life, I've had very little to do with the criminal justice system other than teaching juveniles incarcerated at the Rhode Island Training School in Cranston. Even then, I never wanted to know the nature of their crimes. Those young boys and girls were first and foremost my students.

As I listened to the testimony of the victims especially, I often thought about the young women and men I taught at the Rhode Island Training School and where they were in their lives. I prayed they had not ended up in the adult system incarcerated at the ACI.

The victim's testimony of horrendous crimes involving all types of violence created a very powerful impression upon all the jurors. They suffered through the crime again recounting these events in response to an endless barrage of questions from the prosecutor. Television shows, newspaper articles, documentaries, pictures, videos and movie accounts of crime have numbed us to the point where violence done to others becomes at worse entertainment and at best a cerebral exercise that may end by us realizing that there but for the grace of God go I.

## Royal School of Church Music Summer Training Course 2011

at Salve Regina University  
Newport, Rhode Island  
Monday, August 1 – Sunday, August 7

\$575 Non RSCMA affiliates  
\$550 for RSCMA Members

A non refundable deposit  
of \$150 is due with the  
registration form.

Make checks payable to:  
**RSCM Rhode Island Course**

Mail registration  
and check to:  
Allen Hill, Registrar  
Emmanuel Church  
42 Dearborn St.  
Newport, Rhode Island  
02840-3408

Course balance is  
due by May 15, 2011

We are accepting 15 adults,  
with residence hall provided.

### Music faculty includes:

**Ben Hutto, Music Director**  
St. Albans School, Washington, DC

**Dr. Mark Howe**  
Cathedral Church, Burlington, VT

**Anne Williams Marcue**  
St. Stephens Church, Pittsfield, MA

**Jason Roberts, Organist**  
St. James Church, West Hartford, CT

**Jeffrey Clark, Head Proctor**

A repertoire list is available on the website:

website: [www.emmanuelnewport.org](http://www.emmanuelnewport.org)

email: [rscmri@emmanuelnewport.org](mailto:rscmri@emmanuelnewport.org)

phone: 401-486-5886 (Priscilla Rigg, Course Manager)  
or 401-884-4116 (St. Luke's Church)

- Course fee includes housing, meals and activities.
- Participants are responsible for travel and music.
- Alto, tenors and basses – 1st acceptance

However, when you sit in a courtroom and listen to victims tell their story, then the witness and testimony becomes so powerful your mind becomes connected to your heart and you are changed. You become invested in this process that seeks justice for this person. And this can be done with great evil, as well as, great good.

Ash Wednesday was a 'great good' because we were called into the Lenten Season to be witnesses to God's great love and goodness manifested in our lives through God's Son Jesus. Last Sunday I was so moved to hear the very heartfelt testimonials of our Dominican Republic Missioners as they recounted their experiences in the DR and how those experiences changed their lives. Their testimony connected our minds with our hearts and their experiences changed us for the better by their witness. I don't think there was a dry eye in church last Sunday as our missioners recounted how serving God's mission on earth is a life changing event.

As I prepare for ordination to the priesthood, God willing, I am reminded daily of the power and the responsibility of Holy Orders in God's mission to the world. On Ash Wednesday I went to nursing homes and hospitals bringing Holy Communion and ashes to our parishioners. Identification as a clergy person wearing a clerical collar and a black suit is a powerful witness. In court whenever we voted to indict, 'True Bill,' many of the jurors would slowly raise their hands and then look over their shoulder to the very back corner of the room where I sat to see how I voted.

In Miriam Hospital a very young Hispanic woman begged me to give the Last Rites of the church to her dying husband in ICU. After I finished, she broke down and sobbed in my arms. Walking out the door of the hospital, a receptionist in the main lobby asks me to give her ashes. She stands at her work station and receives the ashes.



St. Luke's Church  
Sunday, April 10, 2011 5 p.m.  
The Fifth Sunday of Lent

Presented by the St. Cecilia and Canterbury Choirs

Featuring music by Iain Quinn, David Hogan,  
Peter Ashton and John Stainer

Let this service of sung evening prayer mark your  
Lenten worship in a quiet and holy way.

Bring your family and friends to hear this  
intergenerational choir sing the ancient canticles  
and beautiful hymns for evening.

## Great news from **Music on the Hill!**

The concert season is expanding from a 2-week June Festival. We are adding a spring and a fall concert, as well. The spring concert will be on Sunday, April 3<sup>rd</sup> at 4:00 pm right here in St. Luke's Sanctuary!

### **Pre-Festival Concert**

Erwin Schulhoff, **Concerto for Flute, Viola & Bass.**  
Flute, Genevieve Briggs; Viola,  
Susan Culpo; Bass, John M. Pellegrino.

Nathan Currier **Snow Flake from Three American Songs**  
Baritone, Rene de la Garza; Piano, Manabu Takasawa.

Wolfgang Amadeus Mozart **Per Questa Bella Mano K. 612**  
Baritone, Rene de le Garza; Bass, John M. Pellegrino;  
Piano, Manabu Takasawa;

August Klughardt **Song of the Reeds Op. 28**  
Oboe, Margaret Butler; Viola, Susan Culpo;  
Piano, Manabu Takasawa.

This 1-hour program will have no intermission. Tickets: advanced sales \$15 per person; at the door \$20 per person. School & College Students \$7 per student with School ID at the door. To order tickets, make your check payable to Music on the Hill, mail it with your order for the April 3<sup>rd</sup> concert to Music on the Hill, PO Box 633, East Greenwich, RI 02818. Kindly include a stamped, self-addressed envelope.

The musicians look forward to seeing you at the "Meet & Greet" reception after the concert.

I get into my car humbled and amazed. The words, "Lord, I am not worthy to receive you, but only say the word and I shall be healed," plays over and over in my mind.

Being witnesses to the truth of our faith in our Lord Jesus Christ is a powerful and life changing experience. We have the power to bring God to people. We have the power to bring people to God. We have the power to bring ourselves to both.

*Faithfully yours in Christ,  
Deacon John*

---

### **WORDS FROM THE WARDEN**

We had a successful March Vestry meeting welcoming our newest Vestry members (although we missed Jennifer Hague). We mixed some light dinner & socializing prior to the meeting.

Everyone had a great time! It doesn't have to be all business. Please remember that the Vestry is here to serve the congregation. Please feel free to voice your concerns to any of us.

The self-study team is off & rolling. Many people have been 'tapped' already for their input. The March Madness collection for the Food Pantry has been going well; many thanks for your donations.

For April we are looking forward to a spring clean-up. We will be asking for volunteers to help out when the weather cooperates!

Wishing you all a Holy Lenten season and looking forward to a beautiful Easter season (and warmer weather!)

*Faithfully,  
Lisa Johnson, Senior Warden*

## The Lengthening days of a Holy Lent ...

As we enter the second half of our journey through the Lenten season, we feel the lengthening of days *and* the deepening “interior work” that this period promises us. It is not Easter yet and we must still experience this time for self-examination and reflection modeled after Jesus’ 40-day “wilderness period.”

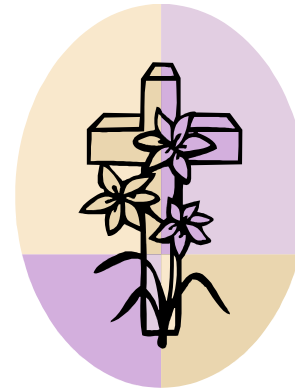
For some I hope you are enjoying the enriching programs well underway at St Luke’s; be it the two-pronged Lenten Series on Wednesday evenings or the Clergy Forum held between services on Sunday. For others, perhaps you’ve discerned a balance between the thoughtful “giving up” (devotion or discipline) of something in your common life *and* the “taking on” (growth and transformation) of a practice new and creative. All of this is done in community *and*, at the same time, is deeply personal – between you and the Spirit.

For me I began on Ash Wednesday by taking time to do something I dearly love – a 10-day ski holiday to a most beautiful spot – stretching, quite literally, my body and mind. In April I will “skim” across the water in a different form, by trying something completely new – an early-morning lesson in crewing on the Seekonk River. Both activities provide a repetitive, prayerful rhythm, by “swing of ski” or “stroke of oar” that can deepen a connection to God *and* nature in the form of “full-body rosary.” At least that’s what I’m going for! I am also abstaining from red meat and alcohol, like last year, in an effort to shed some unwanted “winter weight.”

Whatever you are doing and experiencing, I would love to hear about your “Lenten practices” if you are so inclined to share them with me. It can be a marvelous time of self-discovery!

All best wishes for a meaningful Lent and a Joyous Easter!

*Jeff Clark - LAMP*



## *April Happenings for Youth Christian Education*

**April 3**

Church School & J2A classes meet

**April 10**

Youth Sunday

No classes today

**April 17**

*Palm Sunday*

Church School & J2A classes meet

**April 2**

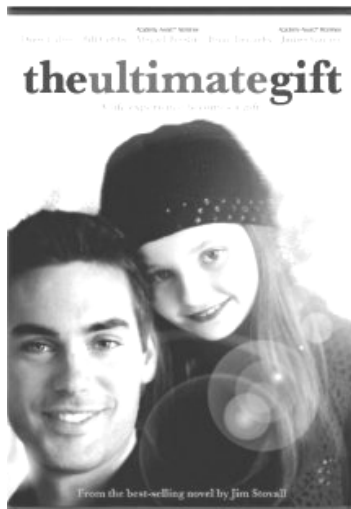
*Easter Sunday*

## A Post-Easter Faith in Film

Just when you thought that we couldn't add one more thing to round out April's extensive program offerings, we have a final item! This month's "Faith in Film" selection was made by our loyal, steadfast and diligent Altar Guild, "**The Ultimate Gift**," starring James Garner. Below is a brief synopsis:

When his wealthy grandfather (James Garner) finally dies, Jason Stevens (Drew Fuller) fully expects to benefit when it comes to the reading of the will. But instead of a sizable inheritance, Jason receives a test, a series of tasks he must complete before he can get any money. Oscar nominee Abigail Breslin and former beauty queen Lee Meriwether also star in this coming-of-age drama based on the novel by Jim Stovall.

Join us on Friday, April 29<sup>th</sup> at 7:00 at the home of Bruce and Carol Stevens, who have generously offered to host. They live at 180 Kent Drive, East Greenwich. Light refreshments provided. Contact Jeff Clark for further information.



## Self Study Update

Your Self Study Committee is working on all sorts of things! Even at this early time some small pieces of the parish profile are starting to emerge! Once drafts and early versions of the parish profile chapters are available, we'll be making them available for your review & comment through the web site and parish office.

As a way to define "who St. Luke's is", Self Study Committee members have been meeting with various St. Luke's groups in the last 4 to 6 weeks: Canterbury Choir, Theology on Tap, Ushers, Worship Committee, Children's Choir parents and the annual meeting. These gatherings have provided us the opportunity to interact with many parishioners and hear your opinions.

But what if you are not a member of any of these groups or you were not available when we met with a group you belong to? We are holding two parish wide events to conduct further discussions. Join us either ....

- *When we meet with some other groups through March and April*
- *Sunday, April 3, following the 10:00 am service for pie and coffee*
- *Sunday, April 10, at 7:00 pm for wine & cheese.*

Last, but not least, we will be mailing (e-mail & US mail) a questionnaire to all families on the St. Luke's mailing list.

We are doing this to give all parishioners the opportunity to express their opinion. If these methods do not work for you, please contact any of the Self Study Committee members directly. Barbara DeFusco has all of our phone numbers and e-mail addresses. The committee members are Paul Brookes, Sue Clement, Fran Gammell-Roach, Sandy Horton, Keith Hudson, Ellen Palmer, Al Potter, Jim Rezendes, Dave Savage & Dana Sparhawk. Look for us with our white and green name tags the next time you are in church.

*Many thanks and God bless,  
Jim Rezendes, Self-Study Chairman*

**Thank you!**

Thank you to Ann Holmstedt for the fantastic job she has done making sure there are greeters at each service, as well as the special services, and reminding them as their turns come up. This is an important ministry and we appreciate all you've done.

If anyone is interested in taking up this ministry, please contact the office through email, a phone call or speak with Ann, Fr. Greg or Deacon John.

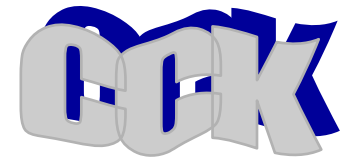
Thank you again Ann.

## Property Committee

St. Luke's is becoming GREENER – we are recycling more and ask you to help. Blue containers for bottles and cans are being put in the office, Blackburn Room, Auditorium and Dining Room and kitchen. These are for recycle items but not trash. We also have containers for paper in the office and classrooms. Help us become better stewards of our world.

The April Property Breakfast is being moved to the **2<sup>nd</sup> Thursday, April 14<sup>th</sup>**, because of Maundy Thursday. Mark your calendar and plan to join us.

*Sandy and Peggy Rubel (884-6594)*



**CHRIST COMMUNITY KITCHEN AT ST. LUKE'S**  
is on April 25th @ 5pm  
in the St. Luke's dining room.

COME JOIN IN FELLOWSHIP, FOOD AND MUSIC

The dinner is free.  
You DO NOT have to be a St. Luke's parishioner to enjoy.